



## LNG Wayfinder and LNG Horizon, Cloud-Enabled Market and Price Analytic and Forecasting Services

*Powered by proprietary research, expert analysis, industry-leading data intelligence, and sophisticated forecasting, these services enable companies to analyze market developments and better anticipate what is coming over the horizon.*

### LNG Wayfinder

A historical market and price analytic service that utilizes Kpler's industry-leading LNG trade data and other reliable information sources. It covers ten years of historical data on a monthly basis and is updated quarterly.

### LNG Horizon

A market and price forecasting service that provides insightful analysis of global gas and LNG markets. It forecasts the next ten years on a monthly basis and is updated quarterly.

Both services deliver deep market analysis and forecasting that are relevant to your strategic, commercial, financial, and investment decisions and operations. They use BRG DRIVE's powerful cloud computing and efficient user interface to provide the analysis, visualization, and presentation of analytic results under a variety of parameters (e.g., geographic focus, price metrics, currency units, volume measures, analytic methods, and data comparisons).<sup>1</sup>

<sup>1</sup> BRG DRIVE™ is BRG's Analytics as a Service platform, built to help clients and consulting teams create and sustain results.

BRG DRIVE provides clients with an innovative, multifaceted platform that integrates technology and people to identify and solve problems. Leveraging dashboards, scorecards, and custom analytics from any data source allows BRG and its clients to derive actionable insights and collaborate instantly.

## LNG Wayfinder

LNG Wayfinder is a product of BRG Energy & Climate, a leading source of market and economic analysis for the global gas industry. It utilizes LNG trade and shipping data from Kpler, a leading provider of commodity market data intelligence, and is powered by BRG DRIVE's cloud-based data analysis and visualization platform. LNG Wayfinder is designed to provide integrated expert analysis of Kpler's data in combination with other leading LNG data and information resources by country and region on a monthly basis since 2008. The service provides comprehensive analysis of global LNG prices, markets, contracts, trade, and infrastructure at a fraction of the time and cost that it would take to analyze this information yourself. LNG Wayfinder provides integrated, cloud-enabled access to BRG Energy & Climate's:

- detailed analysis of global LNG trade and contract information from Kpler
- proprietary research to curate and normalize other credible data sources for global gas and LNG markets and prices
- objective, independent analysis of global gas and LNG prices and markets, critical market drivers, and competitive commercial conditions
- user-friendly unit converter and streamlined interface to facilitate analysis

*LNG Wayfinder provides a single portal to analyze and visualize carefully curated historical data from Kpler and other reliable sources on a monthly basis since 2008.*



### Prices and Arbitrage

- Global LNG FOB and DES prices, price differentials, and price relationships for major oil index prices, natural gas prices, and LNG trading points worldwide
- Arbitrage analysis of major prices in the Americas, Europe, and Asia



### Supply, Demand, and Trade

- Analysis of global LNG imports and exports
- Pipeline gas imports and exports
- LNG competition with pipeline imports



### Contracts

- Contracted trade volumes and delivery periods for active SPAs for importers and exporters
- Contract market evolution by importer, exporter, and duration



### Shipping

- Shipping and trade efficiency metrics (e.g., cargo tonnage, nautical mileage, and travel times)
- Evaluation of intermediary cargo trades on efficiency metrics



### Capacity Utilization

- LNG liquefaction and regasification capacity and capacity utilization
- Comparison of flexible and inflexible contracted volumes to imports/exports and regasification/liquefaction capacity by country

## LNG Horizon

LNG Horizon is a market and price forecasting service of BRG Energy & Climate, which utilizes sophisticated modeling techniques to represent the future actions of market agents seeking to maximize their own incentives. Updated quarterly, it delivers expert forecasts of the integrated global natural gas and LNG markets, including prices, supply, demand, and trade results for the next ten years on a monthly basis. LNG Horizon provides cutting-edge market analytics and forecasting at much lower time and cost than it would take for you to perform it yourself. LNG Horizon provides cloud-enabled access to BRG Energy & Climate's:

- independent forecasting and analysis of global gas and LNG prices and markets, market drivers, commercial trends, and competitive conditions
- expert market perspectives and cutting-edge, integrated global gas and LNG forecasting model to generate market vision and insights that you can trust

*A powerful combination of market and commercial expertise, carefully curated data, and sophisticated market modeling to help companies anticipate future markets.*



### Prices and Arbitrage

- Global prices, price differentials, and LNG-oil and LNG-gas price relationships for major natural gas hub prices and LNG trading points worldwide
- Arbitrage analytics for major prices in the Americas, Europe, and Asia
- LNG netbacks from leading regional end-markets to export locations
- Shipping costs for the major routes from exporters to end markets



### Supply and Demand

- US shale gas and other natural gas production by basin
- Natural gas and LNG supply and import composition for leading export and import countries
- LNG production by region and country—and by terminal in the US
- Capacity expansions for LNG terminals, pipelines, and gas reserves
- Natural gas and LNG demand by region and country



### Trade

- Trade flows between regions and countries
- Pipeline gas trade between countries
- LNG and pipeline imports by region and country
- LNG term and spot sales destination by export country
- LNG liquefaction and regasification capacity by country
- US LNG exports by terminal to destination countries

For more information, please visit [thinkbrg.com/energy/brgdrive](https://thinkbrg.com/energy/brgdrive)

*BRG Energy & Climate advises hydrocarbon, power, and renewable energy producers, sellers, buyers, traders, investors, lenders, and law firms worldwide. Our advice is based on seasoned industry experience and expert analytics in natural gas and LNG, conventional and unconventional exploration and production, and thermal and renewable power generation.*

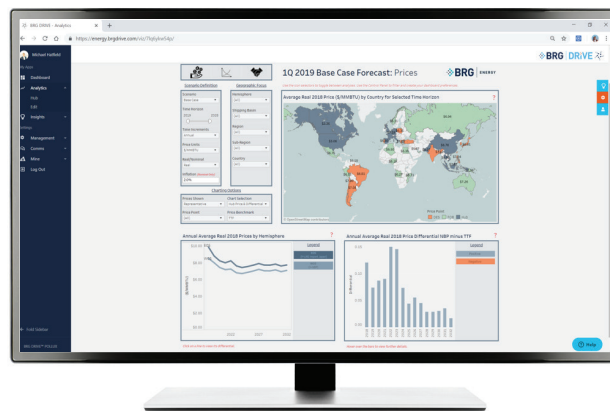
## Cutting edge, cloud-enabled analysis and forecasting



**LNG Wayfinder**  
(10-year monthly historical data)



**LNG Horizon**  
(10-year monthly forecast results)



## LNG Horizon Scenario Services

- **LNG HORIZON PREMIUM**  
Includes two BRG-defined scenarios for the volumes and timing of liquefaction and cross-border pipeline capacity additions.
- **LNG HORIZON PRO**  
Provides access to user-defined scenarios for liquefaction and cross-border pipeline capacity additions, natural gas production levels in major global basins, natural gas and LNG demand in major global demand centers, and oil prices.

For more information, please visit [thinkbrg.com/energy/brgdrive](https://thinkbrg.com/energy/brgdrive)

**Christopher Goncalves**  
Chair and Managing Director,  
BRG Energy & Climate  
Washington, DC  
[cgoncalves@thinkbrg.com](mailto:cgoncalves@thinkbrg.com)  
+1 202.480.2703

**Hal Miller**  
Managing Director,  
BRG Energy & Climate  
Houston  
[hal.miller@thinkbrg.com](mailto:hal.miller@thinkbrg.com)  
+1 832.483.6350

**Stephen Del Regno**  
Managing Director,  
BRG Energy & Climate  
Tokyo, Japan  
[sdelregno@thinkbrg.com](mailto:sdelregno@thinkbrg.com)  
+81 80.3082.5363

**Tom Choi**  
Director,  
BRG Energy & Climate  
Washington, DC  
[tchoi@thinkbrg.com](mailto:tchoi@thinkbrg.com)  
+1 202.753.5834

**Roberto Cunha**  
Director,  
BRG Energy & Climate  
Rio de Janeiro, Brazil  
[rcunha@thinkbrg.com](mailto:rcunha@thinkbrg.com)  
+55 21.99508.4112